

# Electric Bolts from effeff



TECHNILOCK L4



ASSA ABLOY, the global leader  
in door opening solutions

# The security door bolt TECHNILOCK L4 – the reliable solution for sensitive areas



Doors secured with TECHNOLOCK door bolts with their state-of-the-art engineering and high quality offer very high security and reliability.

For use with open-circuit or closed-circuit solutions – TECHNOLOCK is always the right choice.

Depending on the function selected, TECHNOLOCK bolts are ideally suited for safeguarding valuables (e.g. cash offices or strongrooms) or for secure areas (e.g. in prisons).

The many control options are another benefit.

Every TECHNOLOCK bolt can be operated with a simple switch, a TECHNOLOCK control panel, card readers and code-keyboards etc, but also with a traditional profile cylinder or lever handle.

The various different installation options are also part of the success of the TECHNOLOCK bolt.

Mainly installed in the frame they can also be incorporated into the door leaf or horizontally in the door frames.

Full protection of secure areas with TECHNOLOCK L4.

# TECHNILOCK L4

## Application Areas



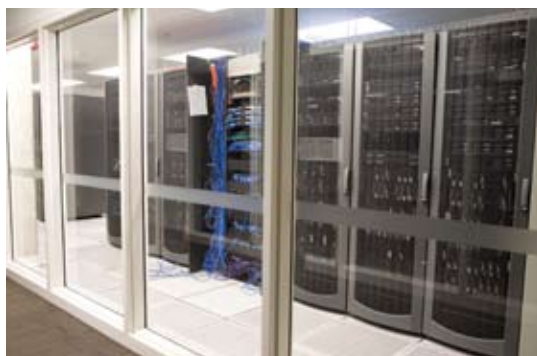
### Prisons – secure behind locks and bolts

Doors which separate individual areas from each other in prisons must meet specific security requirements - simple operation for authorised persons, reliable tumbler, breakdown and manipulation security. The Technilock range has proven to be an ideal locking system. With its extremely high manipulation and forced-entry security, the bolt offers the appropriate and reliable locking system for sector doors in prisons. The staff know that the door is securely locked and can only be opened by authorised individuals. The thick bunch of keys is now a thing of the past. The Technilock bolts can be easily managed via the access control.



### Central bank – sensitive information is classified

Banks must not only safeguard bank notes, coins and other valuables but also sensitive customer data. And some computer rooms hold more valuables than in the vaults themselves. Data and documents must be secured and so must be the access to the computer room itself. In addition to a modern access control system, the locking element itself must be extremely reliable and conform to state-of-the-art technology. The Technilock L4 bolt offers high security and reliable functionality for the protection of highly-sensitive computer rooms. Even if there is a power cut or a malfunction, the daily operating procedures are not put in jeopardy. The expanded functionality of the L4 ensures seamless bridging.



### Jewellers – precious valuables

The secure areas of jewellers have many security features - with the alarm system and access control forming the core of the system. But a door is only ever as secure as its locking element. Secure tumbler and high breakdown and manipulation security make the Technilock L4 bolt the ideal locking solution for this sensitive area.

1 Prison

2 Service area of a bank  
and computer room

3 Jeweller

# TECHNILOCK L4

## A bolt with many advantages

### Features at a glance:

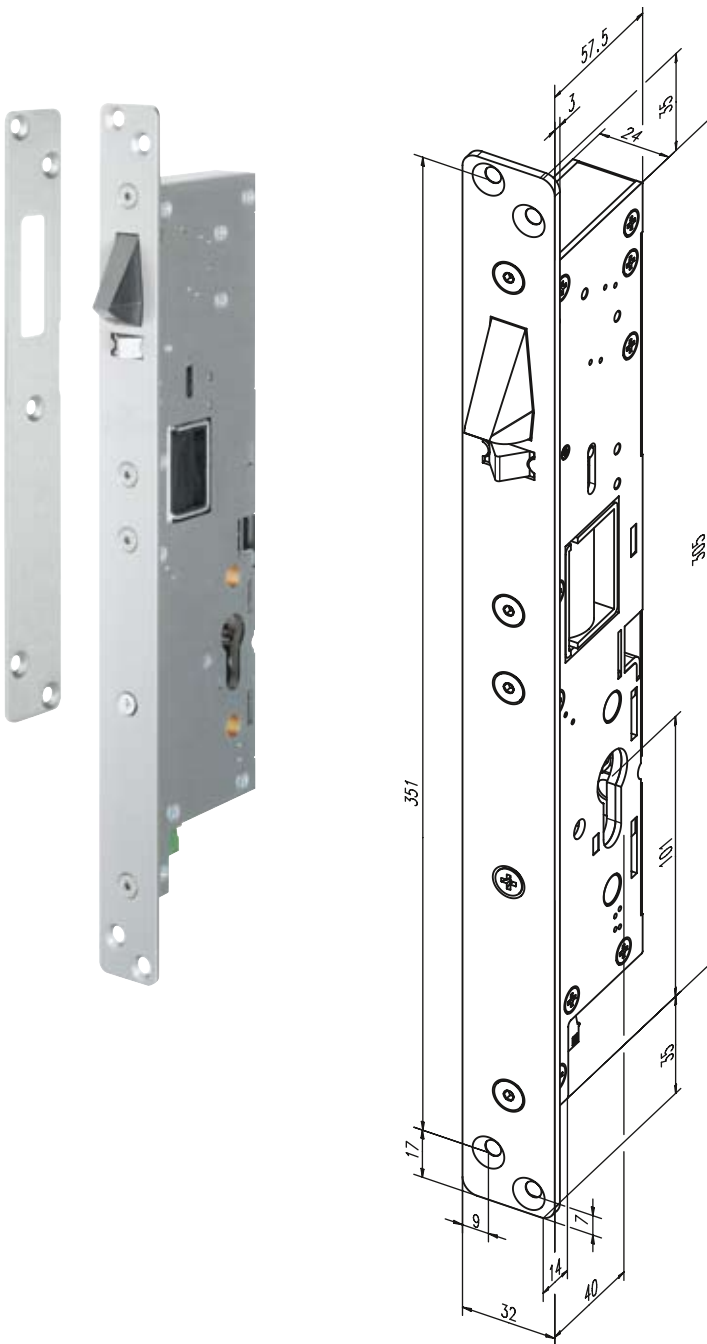
- Electromechanical door bolt for use in high security zones.
- Extremely high resistance to attempted intrusion and manipulation.
- Areas of application: Prisons, banks, police and military building, embassies, hospitals, jewellers etc.
- Reliable impact security.
- Destruction-resistant up to 20,000 N.
- Extensive alarm and monitoring functions.
- Programmable alarm contact.
- Programmable unlocking time.
- Expanded functionality: Two extra functions secure the daily operation even in the case of a power cut or a malfunction and emergency locking if there is a failure.
  - The control latch enables locking in any operational state.
  - The cylinder function can be used for manual locking.
- Integrated error memory and an undervoltage display facilitate fault removal. Functional failures can be retraced quickly on-site for repairs for rapid error analysis, high availability, short breakdown times.
- 80N preload at open-circuit or closed-circuit current always ensure reliable unlocking. Ease of use with revolving door drives. Barrier doors (air pressure) or doors with high sealing pressure can also be safely unlocked.
- Integrated micro-processor control: No extra external control required  
Control possibilities: Access control, central control and monitoring panels, freely programmable controls, radio remote control etc.
- The completely new construction reduces the power input and self-heating of the L4 easily enabling use in wood and thermally insulated profiles.
- Expanded lock plate range: The wide selection offers a matching lock plate for every door and every application.
- Horizontal and vertical installation in the frame.
- When installed horizontally only downward locking possible.
- Vertical installation in the door leaf.
- Can be installed in protected outer area.
- Compatible with the L3 and M4 ranges: Simple exchange possible.
- A clip on relay board provides floating outputs (M4 compatible)



For your valuables put your trust in the L4.

# TECHNILOCK L4

## Technical attributes



### Technical attributes

Break-in resistance fully protected against destruction	20.000 N
Bolt status message	locked/unlocked
Door status message	open/closed
Bolt throw	20 mm
Operating temperature range	-20 °C to +60 °C
Spacing between faceplate and striking plate	Min. 2 mm to max. 5,5 mm
Rated operating voltage	24 V DC, stabilised
Rated operating voltage tolerance range	± 10%
Rated current consumption 24 V DC	4,5 A (0,5 sec)

### Feature

Feature	Order no.
Backset 30 mm, Fail-locked with S-latch, Euro Profile cylinder	844L430ESE-----
Backset 35 mm, Fail-locked with S-latch, Euro Profile cylinder	844L435ESE-----
Backset 40 mm, Fail-locked with S-latch, Euro Profile cylinder	844L440ESE-----
Backset 60 mm, Fail-locked with S-latch, Euro Profile cylinder	844L460ESE-----
Backset 30 mm, Fail-unlocked, Euro Profile cylinder	844L430ESA-----
Backset 35 mm, Fail-unlocked, Euro Profile cylinder	844L435ESA-----
Backset 40 mm, Fail-unlocked, Euro Profile cylinder	844L440ESA-----
Backset 60 mm, Fail-unlocked, Euro Profile cylinder	844L460ESA-----

Suitable striking plates	Lenght max.	Width max.	Depth max.	Best. Nr.
Striking plate L4 Standard	265 mm	34 mm	3 mm + 3 mm**	844L4SBL1----01
Striking plate L4 Standard, LAP, DIN L	265 mm	34 mm + 28 mm*	3 mm + 3 mm**	844L4SBL2----04
Striking plate L4 Standard, LAP, DIN R	265 mm	34 mm + 28 mm*	3 mm + 3 mm**	844L4SBL3----05
Striking plate L4 adjustable	265 mm	34 mm	3 mm + 18 mm**	844L4SBL4----01
Striking plate L4 adjustable, LAP DIN L	265 mm	34 mm + 28 mm*	3 mm + 18 mm**	844L4SBL4----04
Striking plate L4 adjustable, LAP DIN R	265 mm	34 mm + 28 mm*	3 mm + 18 mm**	844L4SBL4----05

\* = lug spreads on 28mm. Total width 62mm

\*\* = material thickness + buildup  
if standard: buildup of magnets  
if adjustable buildup deabolt box



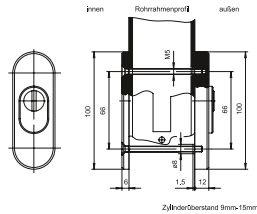
# TECHNILOCK L4

## Accessories



### Security escutcheon 844SX63

Security escutcheon for usage with Technilock L4.



#### Technical attributes

Version	With core drawback protector
Cylinder type	Euro Profile cylinder
Surface	nickel-plated

#### Feature

Security escutcheon

#### Order no.

844SX63-----



### Voltage supply 844PS24

This fully electronic stabilised voltage power supply is designed for the connection at drop bolt model L4. The power supply in steel plate is designed for standard hat rail mounting. A tandem processing for 2 drop bolts is possible. The power supply includes a charging electronic for lead-acid battery with automatic change-over at voltage breakdown.

#### Technical attributes

Height	112 mm
Width	170 mm
Depth	88,5 mm
Rated operating voltage	230 V AC
Rated operating voltage tolerance range	± 10%
Output voltage	24 V DC, stabilised
Separate exit (Accessories)	Max. 3,3 A

#### Feature

Voltage supply

#### Order no.

844PS24D52-----



### Voltage supply 1003-24-4

This voltage supply is required to operate the Technilock bolt with LED display for operating and overload.

#### Technical attributes

Rated operating voltage	230 V AC
Rated operating voltage tolerance range	± 10%
Output voltage	24 V DC, stabilised

#### Feature

4 A, (H/W/L) 66,5/93/140 mm

#### Order no.

1003-24-4---00

ASSA ABLOY is the global leader in door opening solutions, dedicated to satisfying end-user needs for security, safety and convenience.



ASSA ABLOY



Originally part of the ZEISS IKON AG company founded in 1926, **IKON** is ASSA ABLOY's most successful brand for locking and security technology in Germany. The IKON brand offers state-of-the-art products and solutions at the cutting edge of technology. The brand product range includes high-quality mechanical and mechatronic locking cylinders, auxiliary locks and security devices, door fittings and door closers. They provide active burglary protection and safeguard both people and property.



Founded as a precision engineering and electrical engineering workshop in 1936, **effeff** is a global leading brand for electromechanical locking and unlocking devices. Electric strikes, electric bolts, security locks, access control systems and escape route technology are among the effeff brand products which today provide security and convenience in over 75 countries throughout the world.

**ASSA ABLOY Sicherheitstechnik GmbH** is the professional partner worldwide in mechanical and electromechanical security solutions for safety, security and convenience in buildings. The company develops, produces and markets high-quality products and multi-purpose systems under the established IKON and effeff brand names for the private, commercial and public sectors.

**ASSA ABLOY** is the world's leading manufacturer and supplier of door opening solutions, meeting tough enduser demands for safety, security and convenience. With over 32,000 employees, the Group achieves sales of over EUR 3.5 billion.

ASSA ABLOY  
Sicherheitstechnik GmbH  
Bildstockstraße 20  
72458 Albstadt  
albstadt@assaabloy.de  
Tel. +497431 123-700  
Fax +497431 123-258  
www.assaabloy.de